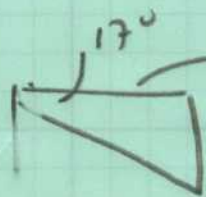


1)



$$x = \frac{30}{\tan 17}$$

$$x = 98.13$$

2)

$$\tan 60 = \frac{y}{98.13}$$

$$y = 169.97$$

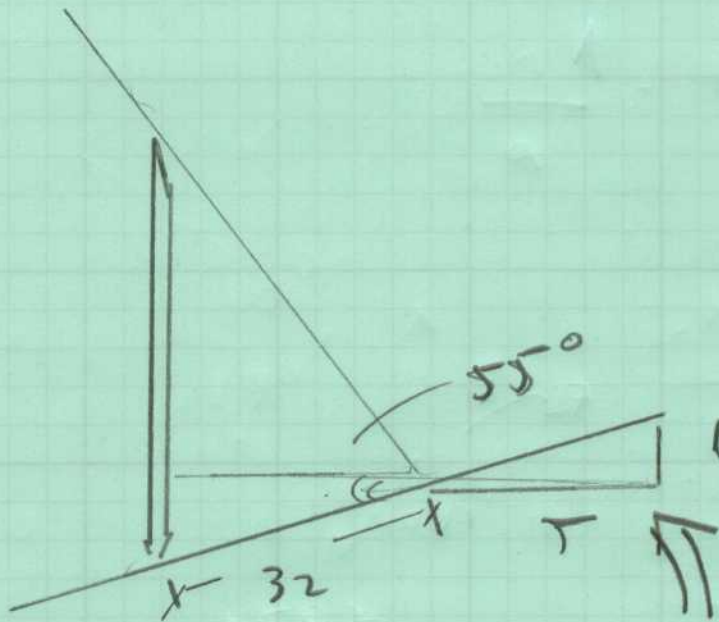
③

$$h = 30 + 169.97$$

$$\underline{\underline{h = 200}}$$

194

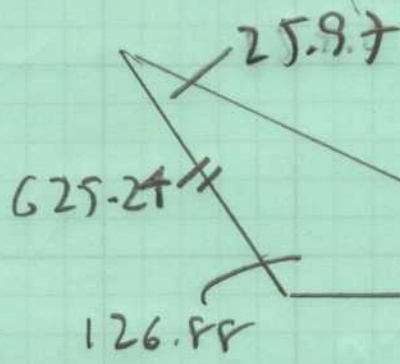
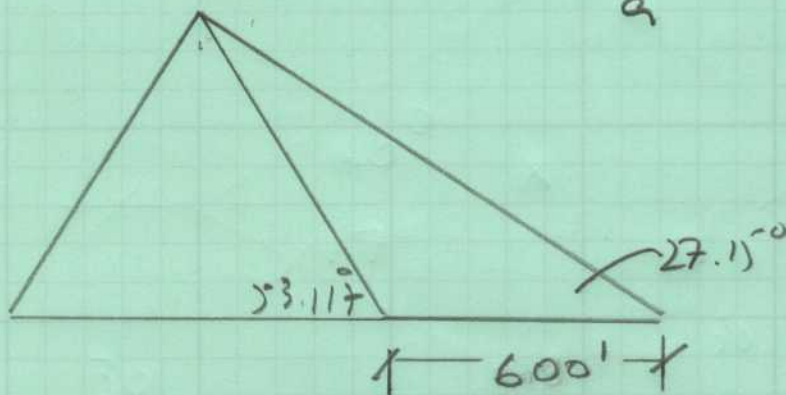
1.34



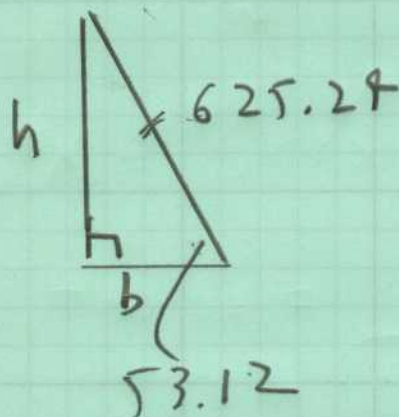
$$\theta = \tan^{-1}\left(\frac{1}{32}\right)$$

$$\theta = 11.31^\circ$$

$$\frac{\sin A}{a} = \frac{\sin B}{b}$$



$$\frac{600}{\sin 25.97} = \frac{x}{\sin 27.15}$$

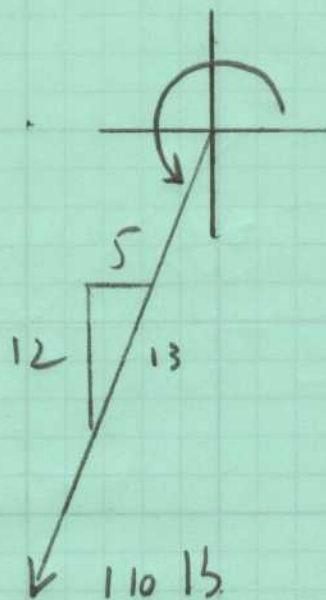


" 1370 "

$$\sin 53.12 = \frac{h}{625}$$

base $2x \cos$

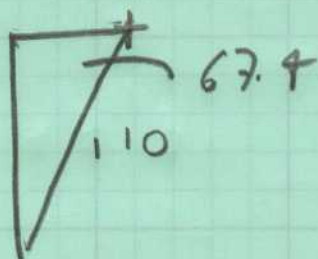
$$h = 625 \cos 53.12$$



$$\theta = \tan^{-1}(12/5)$$

$$\theta = 67.4 \quad (+180)$$

$$\theta = 247.4$$



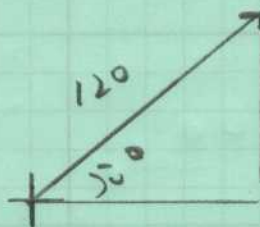
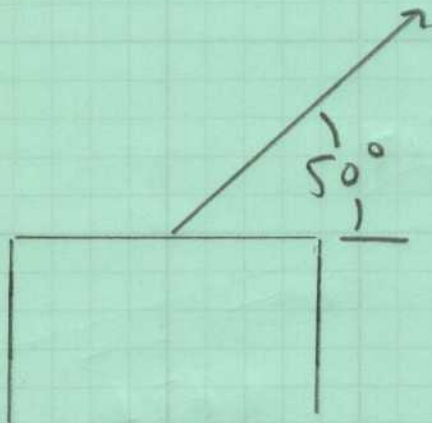
$$x = -110 \cos 67.4$$

$$\underline{\underline{42.31}}$$

$$y = -110 \sin 67.4$$

$$\underline{\underline{101.59}}$$

$$P = 120$$



$$x = 120 \cos 50$$

$$= 77.13$$

$$y = 120 \sin 50$$

$$y = 91.93$$

